

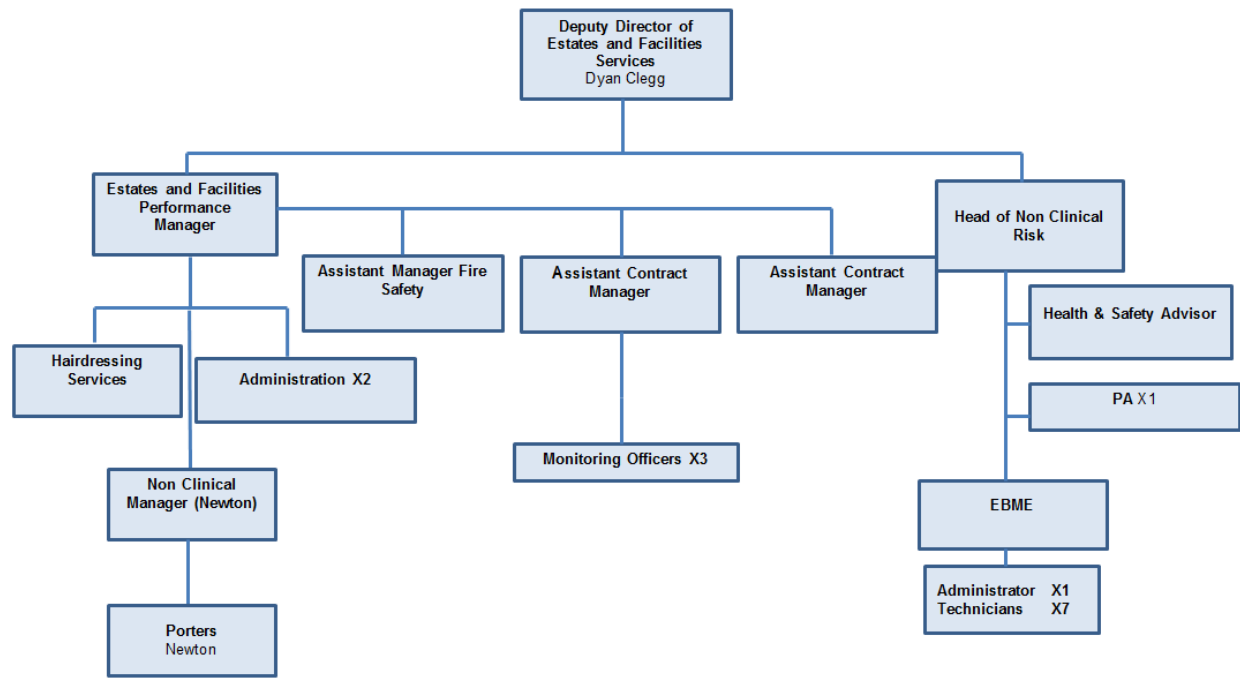
Ref no: 141180318
 From: Public
 Date: 18/03/19
 Subject: Project Management Office

REQUEST & RESPONSE

Please could you provide a structure chart of your Estates & Facilities plus your Project Management Office?

The information below shows the Estates and Facilities (St Helens and Knowsley Teaching Hospitals) and the PFI Project Team (NewHospitals). The Trust does not employ a project team within Estates and Facilities.

Estates & Facilities Management Team



New Hospitals - PFI Project Team

