

Your Consultant is _____

Your nurses were _____

Useful Information

<http://www.patient.co.uk/>
<http://www.nhsdirect.nhs.uk/index.asp>
<http://www.patientsupport.org/uk/>

Ward Telephone Number : 01744 646089

Whiston Hospital
Warrington Road,
Prescot, Merseyside, L35 5DR
Telephone: 0151 426 1600

St Helens Hospital
Marshall Cross Road,
St Helens, Merseyside, WA9 3DA
Telephone: 01744 26633

 /sthknhs  @sthk.nhs
www.sthk.nhs.uk



St Helens and Knowsley
Teaching Hospitals
NHS Trust

Corneal Transplant

Patient Information Leaflet

This leaflet can be made available
in alternative languages / formats on request.

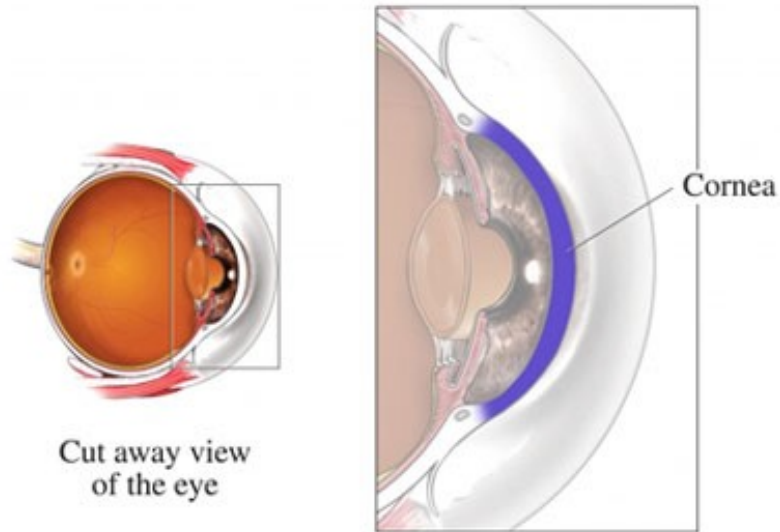
如有需要，本传单可提供其他语言/版式
此單張的其他語言/格式版本可按要求提供

Na żądanie ta ulotka może zostać udostępniona
w innych językach/formatach.

Author: Nurse
Department: Sanderson Suite
Document Number: STHK1505
Version: 001
Review Date: 01 / 09 / 2023

Corneal Transplant

You have been admitted for a corneal transplant, which means replacing the clear front window of the eye.



The type of cornea transplant you have will depend on which part of the cornea is damaged or how much of the cornea needs replacing.

The options include:

- **Penetrating keratoplasty (PK)** – a full-thickness transplant
- **Deep anterior lamellar keratoplasty (DALK)** – replacing or reshaping the outer and middle (front) layers of the cornea

Contact Information

If you have any questions, concerns or require advice, please contact the Triage Desk on:-

The Eye Clinic - 01744 646136/7

Monday-Friday 9-5pm OR

Outside these hours or bank holidays

0151 426 1600

Ask to be put in contact with the on-call Ophthalmologist.

Eye Clinic Liason Officer

For free information and advice, speak to

Maria Pikulski

In confidence at The Eye Clinic at
St Helens & Knowsley Hospitals
Tel: 01744-646145 or 07872414909



Risks

Rejection happens when your immune system recognises the donated cornea as not belonging to you and attacks it.

It's quite a common problem, with symptoms of rejection occurring in about 1 in 5 full thickness corneal transplants, although only about 5% of low-risk grafts actually fail because of this.

Serious rejection is rare after deep anterior lamellar keratoplasty (DALK).

Rejection can occur a few weeks after a cornea transplant, but it's more common after several months.

The problem can often be treated effectively with steroid eye drops if treatment begins as soon as you notice symptoms.

You should seek emergency specialist advice if you notice these symptoms after having a corneal transplant:

- Red eye
- Sensitivity to light (photophobia)
- Vision problems – particularly foggy or clouded vision
- Eye pain

Post Operative Information

Your eye may be covered with an eye pad or plastic shield, which is removed the day after the procedure.

There will be some stitches in the eye to hold the graft in place, and may need removing or adjusting at a later date.

Improvement in vision can be gradual and sight may be blurred.

Your eye may water, but this will settle down.

Some discomfort is expected following your operation, and you may take the pain relief you would normally take for a headache.

Please follow the instructions.

If you have had an endothelial keratoplasty – a type of partial thickness transplant that uses an air bubble to hold the donated cornea in place – you may be asked to lie on your back as much as possible in the first few days after surgery.

This can help hold the transplant in the correct place.

The air bubble will be absorbed after a few days.

Tomorrow Morning

- Wash your hands and remove the eye shield
- If your eye is sticky/crusty bathe gently with cool boiled water from inner corner to outer corner using the swabs provided
- Start eye-drops as prescribed. You will have been given enough drops to cover the course and duration. Please contact the ward if you run out
- You must wear the plastic shield at bed time for 1 week. You can wash it in soap and water and put it on with sellotape
- Please remember to wash your hands before putting drops in

You will be required to come back to eye clinic on

..... at

To see

Things to Avoid

- Doing any heavy lifting or strenuous exercise
- Don't rub or touch the eye or put used tissues or handkerchiefs near the eye
- Do not do any contact sports or swimming until advised by the surgeon
- Do Not Drive until advised by your consultant or surgeon
- Do not look up when in the shower, and try not to get any soap or shampoo in the operated eye
- If you have a job that does not involve physical strain, you can return to work 2 to 3 weeks after surgery
- If your job involves manual labour, you should wait for 3 to 4 months
- Avoid smoky or dusty places as this could irritate your eyes
- If your eye is sensitive to light, wearing sunglasses can help